

Company Profile

# Libertad Cyber Security Advisory



February 2026



# Overview

## **1. Why Libertad**

Vision

Core values

## **2. Services**

Offensive Security

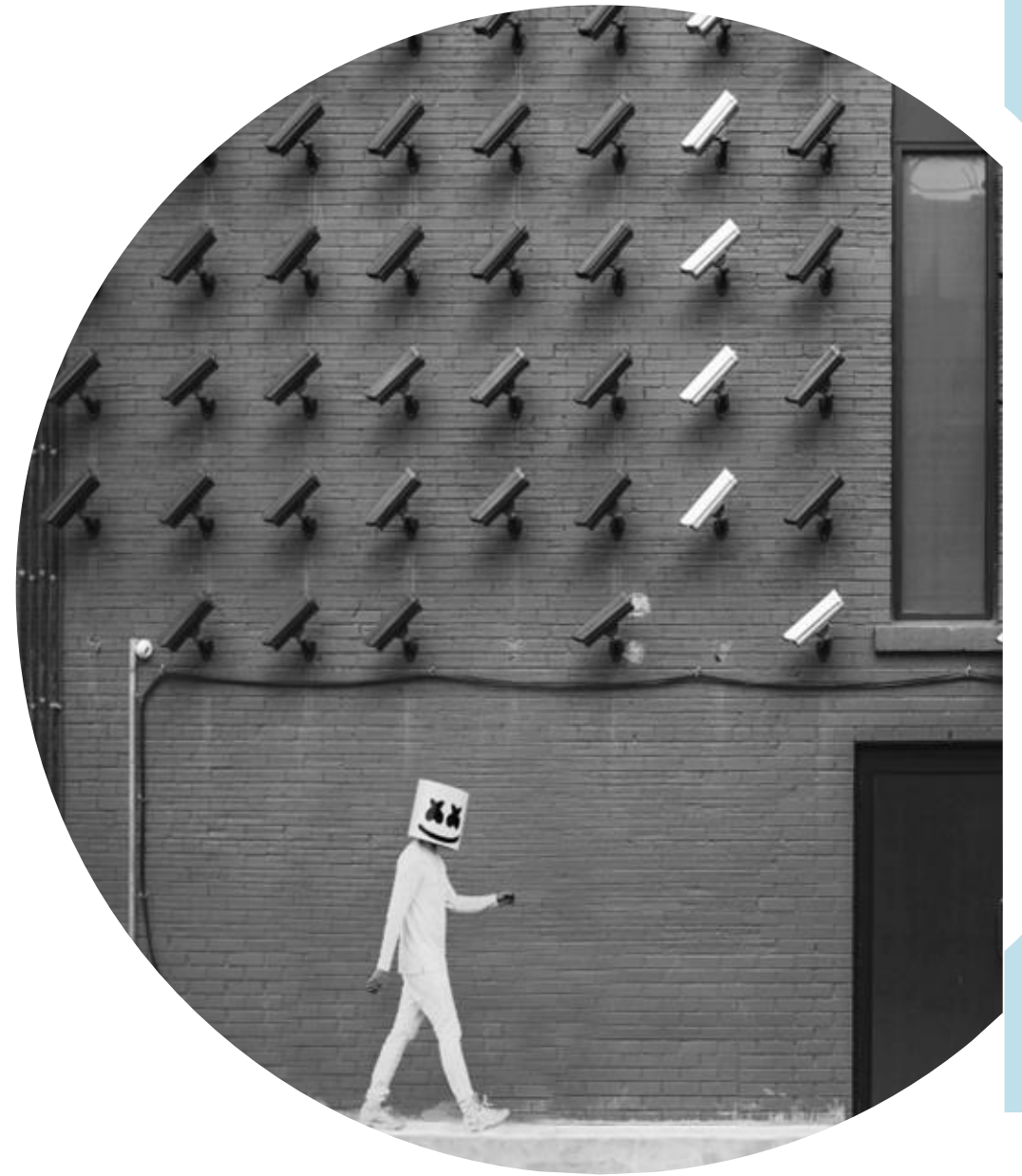
Cloud Reviews

Identity

Tech Due Diligence & GRC

## **3. How we work**

# 01 Why Libertad





# Built to redefine Cyber Resilience

**Established in 2007**, Libertad was built to redefine how high-growth enterprises and SMEs navigate the evolving threat landscape.

We help organisations understand how they would actually be compromised and what to fix first without enterprise-level pricing, inflated scope, or checkbox security.

Our approach leverages **20 combined years** of technical principal oversight to deliver senior-led offensive security and identity governance, ensuring seamless and secure digital transformations for organisations worldwide.



**The vision: Be the elite partner  
for secure, modern SME and  
Enterprise growth.**



# Core Values

We don't do "checkbox" values.

These are our professional standards we actually practice.

**Integrity:** staying true to the technical truth.

**Excellence:** elevating the security baseline.

**Zero Politics:** cutting through bureaucracy to focus on material risk.

**Accessibility:** making enterprise-grade expertise available to SME and Enterprise clients.

**Vigilance:** Finding weaknesses before the adversary does.

# Principal Led Advantage

We provide the senior-level perspective required to navigate **complex technical pivots** and architectural shifts without the overhead of traditional firms.

## Strategic Experience

- Combined 20 years hands-on experience

## Global Security Standards

- CISSP, CCSP, OSCP and more

## Business Risk Integration

- Bridging the gap between technical complexity and business material risk through best-practice advisory

# Our Offensive Security Specialists

---

<b>Role Profile</b>	<b>Key Technical Competencies</b>	<b>Core Certifications</b>
Senior Infrastructure & Cloud Lead	Internal & External Penetration Testing, Active Directory Attack Paths, AWS Cloud Configuration Reviews, and CVE Vulnerability Research	OSCP, CREST CRT, CREST CPSA, eWPTX, MCSE
Senior GRC & Security Auditor	IT Audit (SOX & COBIT), ISO 27001 Compliance, Governance Controls, and Red Team / Social Engineering Engagements	OSCP, CREST CPSA/CRA, eWPTX, ISO 27001 Foundation
Offensive Security Specialist	+Web & Mobile Application Testing (iOS/Android), API Security, Phishing Infrastructure, and Enterprise WiFi Testing	GIAC GPEN, GIAC GSEC, eWPTXv2, eMAPT, CREST CPSA

# Our Clients

## **Banking and Fintech**

Deep experience securing transaction-heavy environments and navigating complex financial regulatory requirements.

## **Retail, Healthcare and Logistics**

Protecting critical supply chains, patient data, and e-commerce infrastructure.

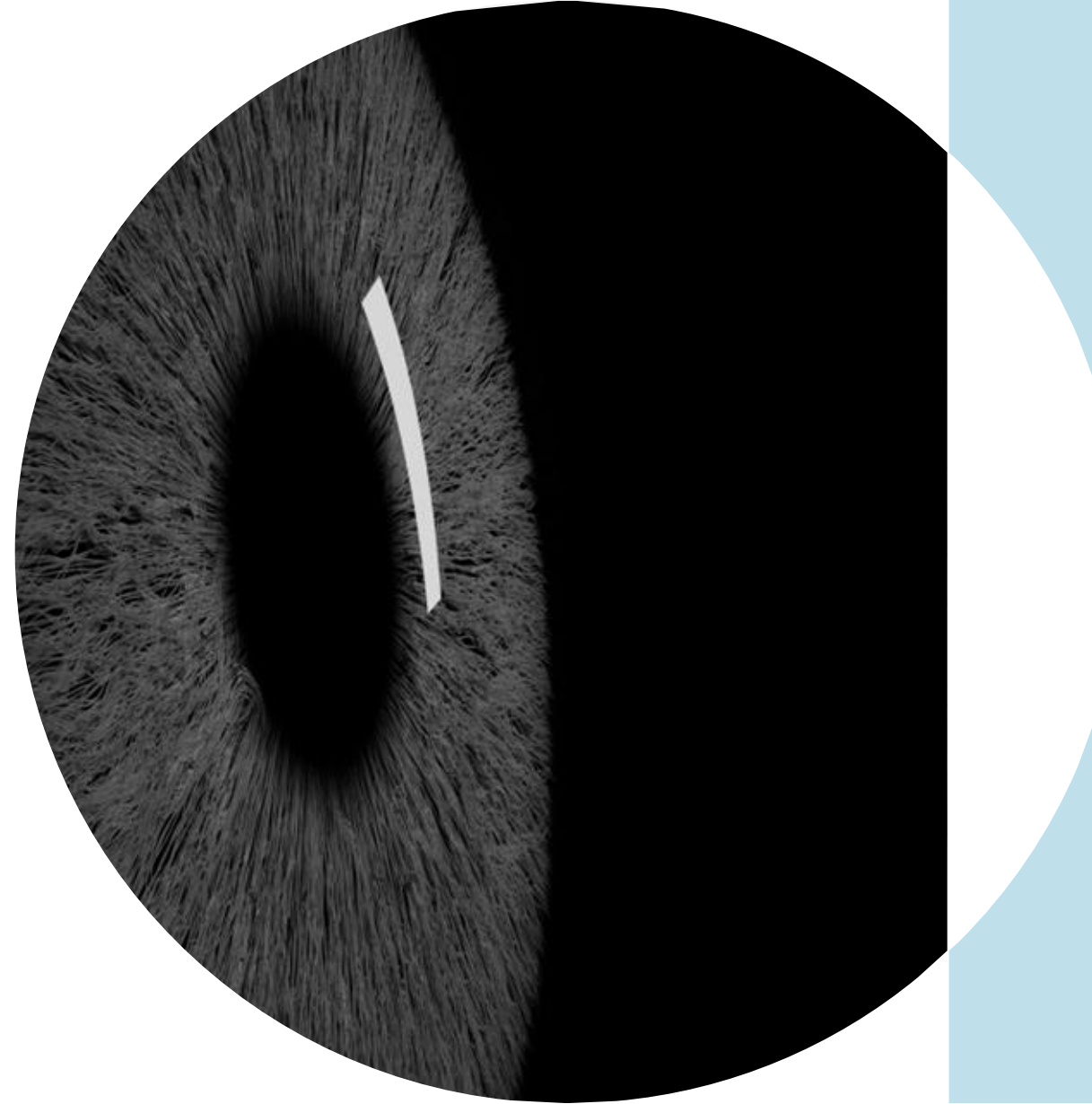
## **SME Focus**

We maintain a strong focus on under-served SME markets in **South Africa** and across **Africa**, applying global standards to local realities

## **Growth-Oriented Digital Firms**

Providing principal-led security assurance for enterprises scaling their web platforms, hybrid cloud ecosystems, and Microsoft identity layers.

# 02 Services



# Offensive Security and Penetration Testing

## Vulnerability & Penetration Testing

- External Network Penetration Testing
- Web Application Penetration Testing
- API Penetration Testing
- Scoped Cloud Security Assessments (Azure, AWS, GCP)

All assessments are attacker-focused, manually validated, and delivered with clear remediation guidance.

## OSINT & Attack Surface Discovery

We identify what attackers can already see and exploit before they do.

- External attack surface mapping
- Public data exposure identification
- Credential leak discovery
- Brand and domain monitoring

# Offensive Security and Penetration Testing

## Social Engineering Assessments

- Phishing simulations (scoped and authorised)

## Ongoing / Managed Security Testing

- Scheduled re-testing and attack surface monitoring
- Continuous security posture improvement for SMEs

## Identity Governance & Role Engineering

Strategic identity management ensuring the right people and AI agents have the right access – and nothing more

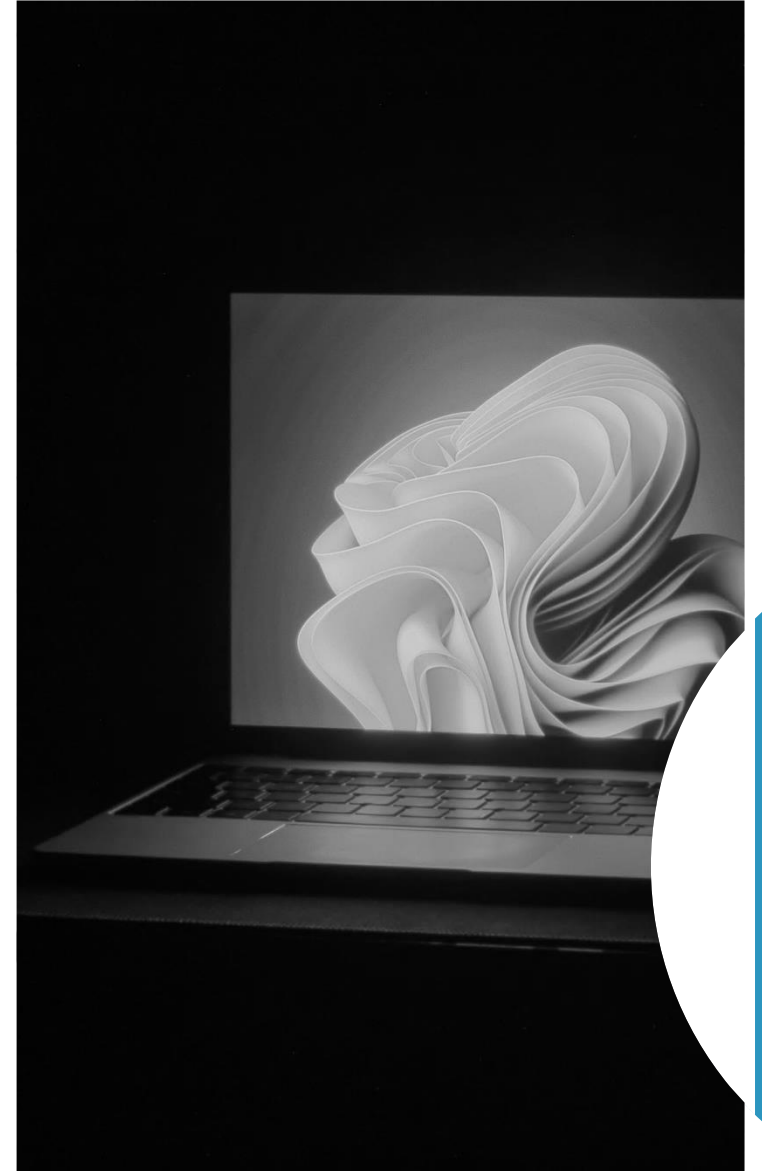
- Role Model Mapping
- Attack Path Analysis
- Privileged Access Management

# Cloud Architecture and Forensic Migration

## Cloud Architecture & Migration

- Zero-Debt Transitions – forensic level migration between cloud environments (Microsoft 365 and Google Workplace)
- Cloud Configuration Assurance Reviews (AWS, Microsoft, Google)
- Device Governance

Secure, “zero-debt” transitions between Microsoft 365 and Google Workspace environments that harden your data and identity layers before you scale into your next chapter.



# Identity Governance & Strategic Advisory

Strategic Identity Governance to ensure the right people and AI agents have the right access and nothing more. We move beyond simple logins to build scalable role models and map out potential attack paths before they are exploited.

## Role Model Mapping

- Architecting scalable, identity-first role structures within platforms like Okta to ensure that both human users and AI agents have the precise access required for their functions

## Attack Path Analysis

- Proactively identifying and closing the lateral movement routes an adversary would use to move through your network and escalate their privileges

# Technical Due Diligence & GRC Advisory

Specialised "under the hood" risk assessments for high-growth firms during buyouts or mergers.

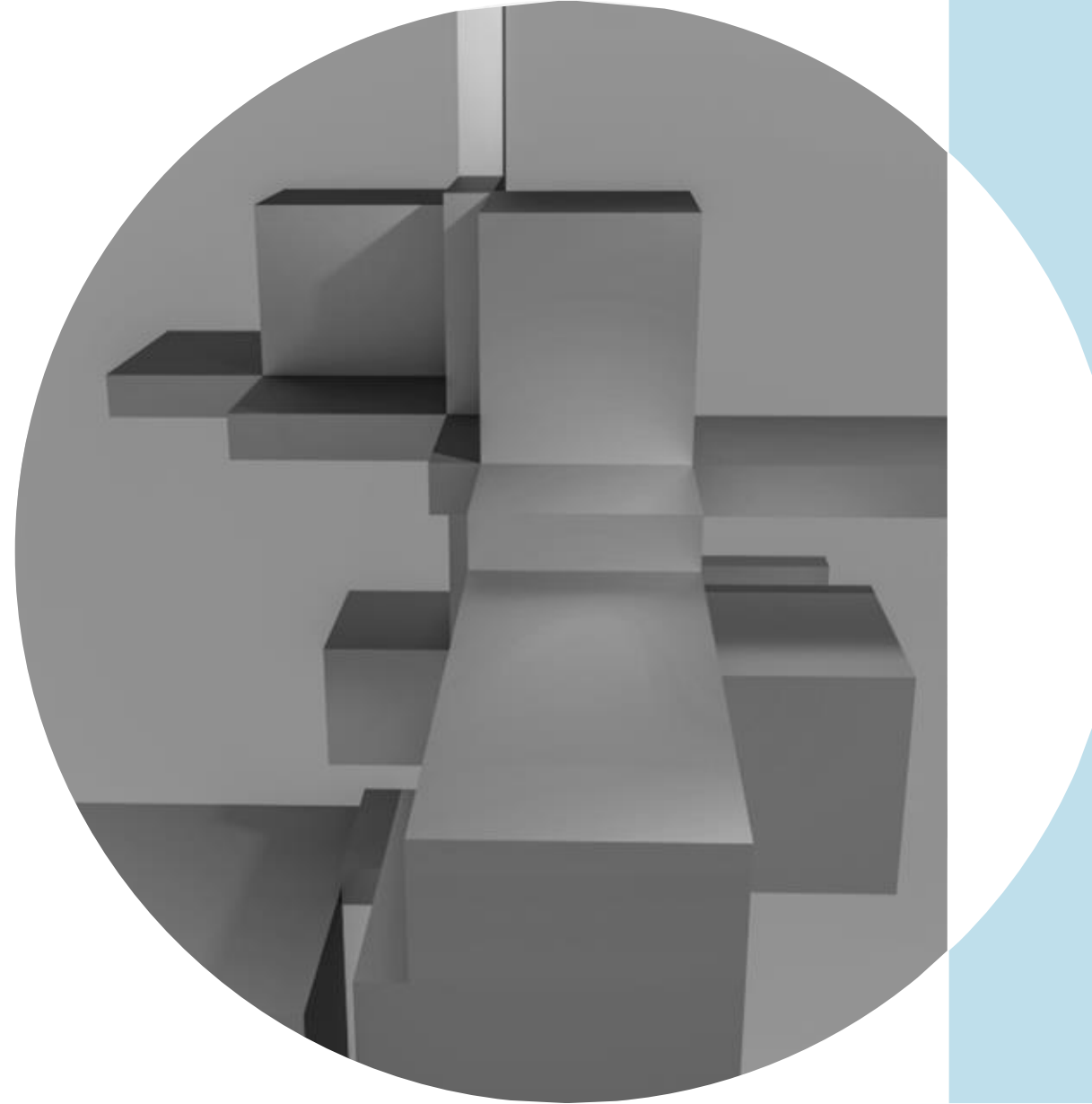
- M&A Technical Due Diligence
- Executive Due Diligence
- Principal Advisory

## Compliance Frameworks

Providing Principal-led assurance that aligns high-growth digital architecture with global ISO/NIST benchmarks including:

- ISO 27001 (Information Security Management)
- ISO 42001 (AI Management System)
- CIS Benchmarks (Critical Security Controls)
- SOC 2 Readiness (Service Organisation Controls)

# 03 How we work



# Our Engagement & Delivery Model

**Principal-led, zero-politics security.**

**We cut the fluff to deliver unvarnished technical truth.**

---

## **01 Project Discovery**

Understanding your business objectives and material risk profile.

---

## **02 Targeted Fieldwork**

Expert testing led by senior professionals.

---

## **03 Clear Reporting**

Actionable insights with prioritised remediation

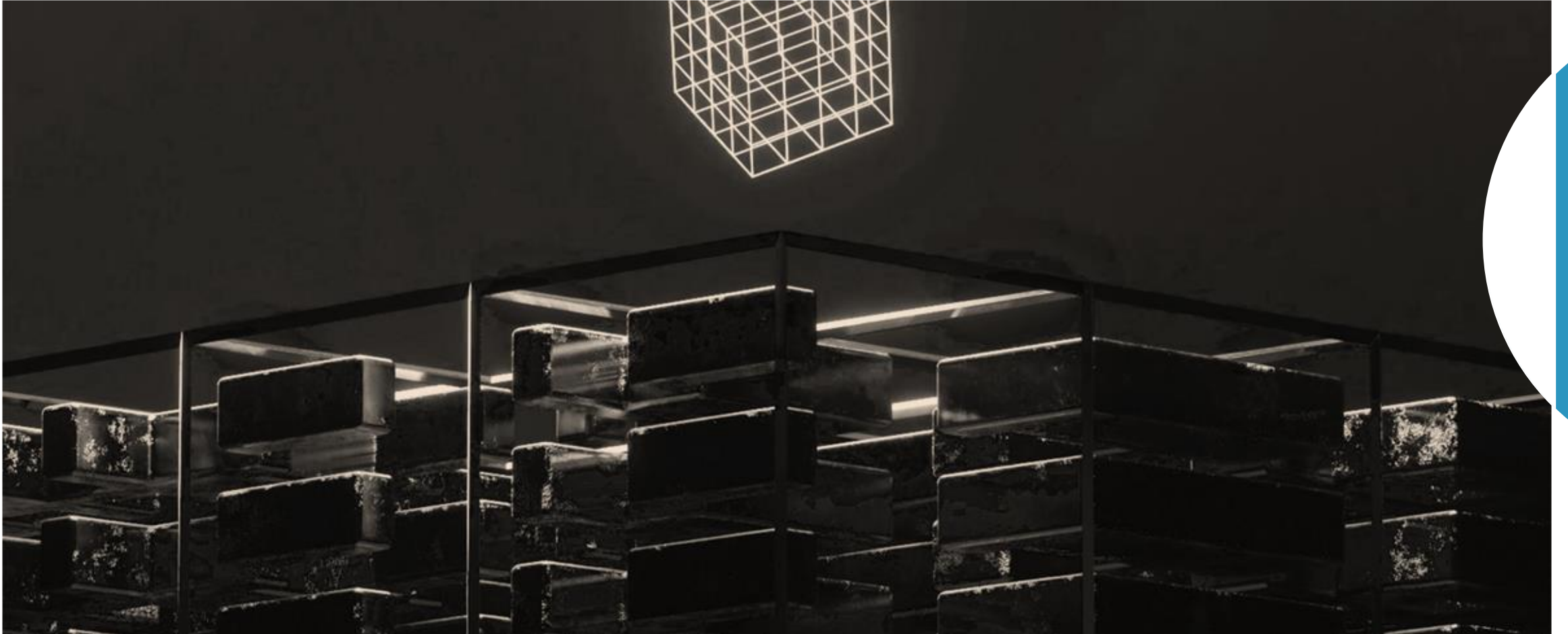
---

*Flexible Options: Once-off assessments, quarterly retainers, or partner-friendly delivery for MSPs*



**“Highly professional, organised and keeps critical projects moving forward.”**

**Nicholas Mackey, WS Development**



**Secure your digital  
future today**

Visit [www.libertad.co.za](http://www.libertad.co.za) for more information

© 2026 Libertad Design CC (Reg: 2010/044126/23). All rights reserved.